

B&C TROOPER /WOMEN - JW 964

LIGHT WEIGHT JACKET / WITH LINING




Trendy light weight bomber jacket with ergonomic concealed hood


POLYESTER 210T TAFFETA

Outer layer: 100% polyester 210T taffeta

Body lining: 100% polyester mesh

Sleeve lining: 100% polyester taffeta

 XS - S - M - L - XL - 2XL

 5 pcs/pack & 10 pcs/carton



WHITE WITH WHITE LINING



BLACK WITH COBALT BLUE LINING



NAVY WITH NEON GREEN LINING



RED WITH WARM GREY LINING



ROYAL BLUE WITH NEON ORANGE LINING



REAL GREEN WITH NEON ORANGE LINING



Showerproof



Feminine cut



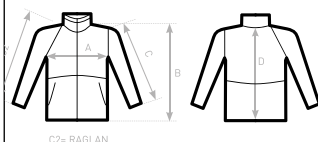
Windproof

- Fashionable contrasted diamond mesh lining, improves breathability and comfort
- Self fabric inner collar
- Contemporary cotton feel heavy rib on cuffs and bottom hem
- Forward shoulder seams for better comfort and water protection
- 2 zipped hand pockets
- 1 inner wallet pocket with closing tabs
- Zip at lower back gives easy full decoration access (front - back - sleeves)
- Fabric tested for the following decoration techniques - screen printing, heat transfer, sublimation (for white only), and embroidery



DUO
CONCEPT

with B&C Trooper /men



SIZES [CM]

B&C TROOPER /WOMEN JW 964	XS	S	M	L	XL	2XL	3XL
A HALF CHEST	48	51	54	57	60	63	-
B BODY LENGTH FROM NECK POINT	60	62	64	66	68	70	-
C SLEEVE LENGTH	62	63,5	65	66,5	68	69,5	-
D CENTER BACK LENGTH	58,5	60,5	62,5	64,5	66,5	68,5	-