

KARIBAN

REFERENCE : K252

SIZES : XS_S_M_L_XL_XXL

COMPOSITION :

Main fabric : Combed cotton single Lacoste pique - 220 100% cotton

Main fabric : Cotton twill 210 For half moon and front placket 100%cotton

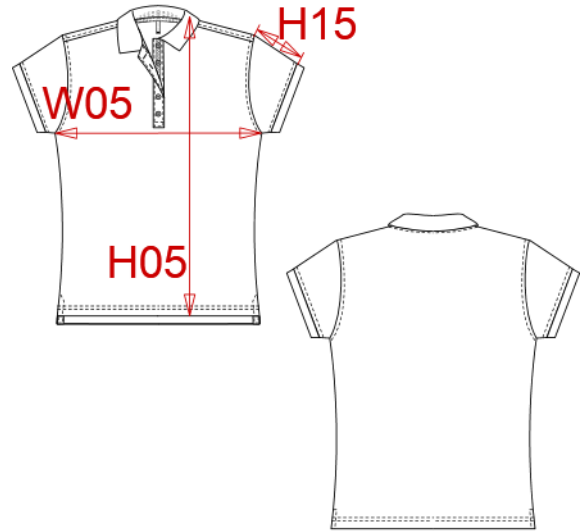
WEIGHT :

Main fabric : 220 gsm

Main fabric : 210 gsm

ARTICLE WEIGHT :

185 gr/pc



DESCRIPTION
Français : Polo manches courtes femme
English : Ladies' short sleeve polo shirt
Nederlands : Dames polo korte mouwen
Deutsch : DAMEN KURZARM POLO
Español : Polo de manga corta para mujer
Italiano : POLO DONNA MANICHE CORTE
Português : Polo de senhora manga curta

COLORS	PANTONE SERIGRAPHIE
Red / White / Navy	200C / White / 433C
Navy / White / Red	296C / White / 200C
White / Navy / White	White / 433C / White

MEASUREMENT							
Description	XS	S	M	L	XL	XXL	
H09 (L) Hauteur totale devant / Front total height	60	62	64	66	68	70	
W05 (L) 1/2 largeur poitrine à 1.5cm de l'emmanchure / 1/2 chest width at 1.5cm below armhole	42	45	48	51	54	57	
H15 (L) Longueur manche avec bord côte / Sleeve length with rib	12,75	13,25	13,75	14,25	14,75	15,25	

CARE LABEL

PACKING	
Box	25 pcs / box XS-S => L:45cm W:35cm H:18cm GW:7.20kg NW:6.00kg M-L => L:48cm W:37cm H:18cm GW:8.00kg NW:7.00kg XL-XXL => L:52cm W:37cm H:18cm GW:9.00kg NW:7.60kg