

# KARIBAN

**REFERENCE :** K263

**SIZES :** XS\_S\_M\_L\_XL\_XXL

**COMPOSITION :**

Main fabric : Cotton single jersey - 180 For solid colors 100% cotton

Main fabric : Polyester / Cotton single jersey (24/1) 65/35 - 180 65%polyester/ 35%cotton

Main fabric : Cotton / Polyester single jersey 80/20 - 180 80% cotton / 20%polyester

**WEIGHT :**

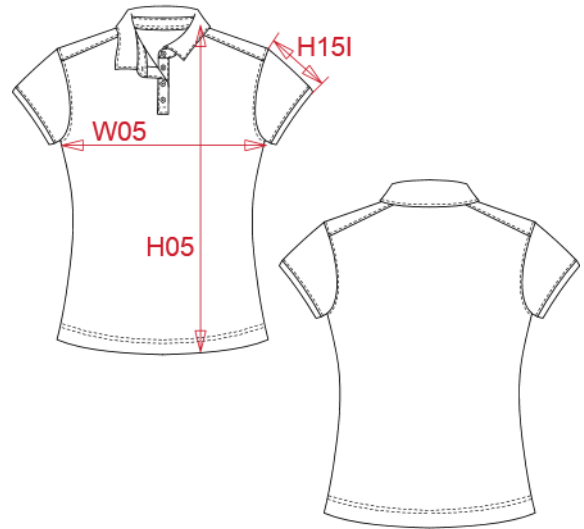
Main fabric : 180 gsm

Main fabric : 180 gsm

Main fabric : 180 gsm

**ARTICLE WEIGHT :**

140 gr/pc



DESCRIPTION
<b>Français :</b> Polo jersey manches courtes femme
<b>English :</b> Ladies' short sleeve jersey polo shirt
<b>Nederlands :</b> Damespolo korte mouwen van jersey
<b>Deutsch :</b> Jersey-Kurzarm-Polohemd für Damen
<b>Español :</b> Polo jersey de manga corta mujer
<b>Italiano :</b> Polo jersey donna manica corta
<b>Português :</b> Polo jersey de senhora de manga curta

COLORS	PANTONE SERIGRAPHIE
White	White
Black	Black
Navy	433C
Red	200C
Sky blue	278C
Light khaki	7764C
Grey heather	Based on 417C
French navy heather	Based on 432C

MEASUREMENT						
Description	XS	S	M	L	XL	XXL
<b>H05 (L)</b> Hauteur totale / Total height	60	62	64	66	68	70
<b>W05 (L)</b> 1/2 largeur poitrine à 1.5cm de l'emmanchure / 1/2 chest width at 1.5cm below armhole	43	46	49	52	55	58
<b>H15I (L)</b> Longueur manche avec bord côte / Sleeve length with rib	12,75	13,50	14,25	15	15,75	16,50

CARE LABEL

PACKING	
Box	30 pcs / box XS-S => L:60cm W:40cm H:14cm GW:5.50kg NW:4.00kg M-L => L:60cm W:40cm H:15cm GW:6.10kg NW:4.60kg XL-XXL => L:60cm W:40cm H:16cm GW:7.40kg NW:5.90kg