

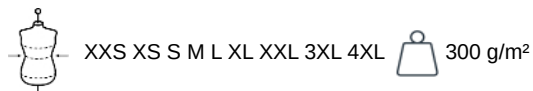
# KARIBAN

K4009

## Unisex eco-friendly French Terry hooded sweatshirt

- French Terry: lightweight, comfortable and hard-wearing.
- Enzyme washed to maintain a smooth surface after several washes.
- No label: full decoration access for your brand.

80% organic cotton / 20% recycled polyester post-consumer. Oxford Grey 75% organic cotton / 25% recycled polyester post-consumer. French terry LST (Low Shrinkage Terry). Fabric: enzyme washed. Slim fit. 2 piped front pockets. Ribbed cuffs, hem and lined hood, with matching drawstring with metal tip. Half-moon finish at the neckline to facilitate decoration access inside. Twill taped neck and V finish at neckline. No brand label on neck, only size tag for easy decoration access.



### Certifications (1)

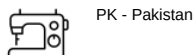


### More information

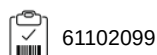
#### Logistic



#### Country of origin



#### Customs code



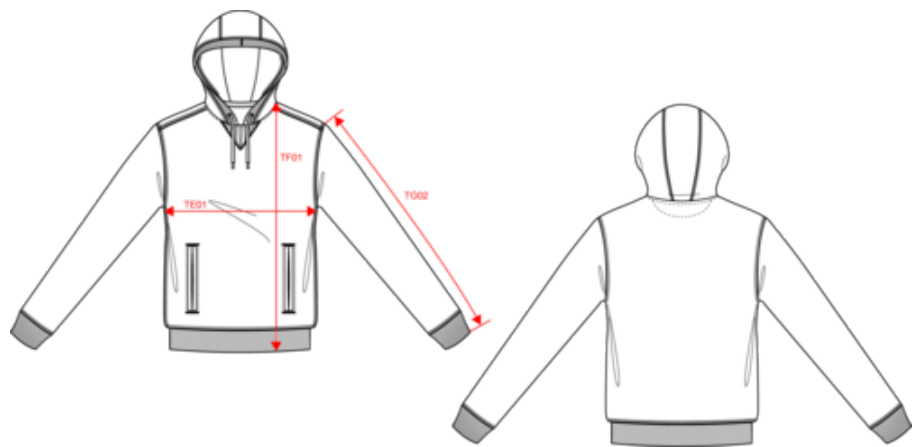
(1) NEW VERSION OF THE GOTS STANDARD V7.0 Due to this new version, the color Oxford Grey of this product is no longer covered by the GOTS certification (Global Organic Textile Standard).

# KARIBAN

K4009

Unisex eco-friendly French Terry hooded sweatshirt

Dimensions (cm)




| Measurements in cm                            | XXS   | XS    | S     | M     | L     | XL    | XXL   | 3XL   | 4XL   |
|---|-------|-------|-------|-------|-------|-------|-------|-------|-------|
| TE01 - 1/2 chest width at 1.5cm below armhole | 46.00 | 49.00 | 52.00 | 55.00 | 58.00 | 61.00 | 64.00 | 67.00 | 70.00 |
| TF01 - Total height from HSP                  | 65.50 | 67.50 | 69.50 | 71.50 | 73.50 | 75.50 | 77.50 | 79.50 | 81.50 |
| TG02 - Long sleeve length                     | 61.50 | 62.50 | 63.50 | 64.50 | 65.50 | 66.50 | 67.50 | 68.50 | 69.50 |


# KARIBAN


K4009


## Unisex eco-friendly French Terry hooded sweatshirt


### Colours information

**Black**  
RVB : 35,35,37  
Pantone C : Black  
Pantone TCX : 19-4004TCX

**Navy**  
RVB : 41,46,56  
Pantone C : 433C  
Pantone TCX : 19-4012TCX

**Oxford Grey**  
RVB :  
Pantone C : Based on Cool gray 7C  
Pantone TCX : Based on 16-3850TCX

**Red**  
RVB : 195,32,54  
Pantone C : 200C  
Pantone TCX : 19-1664TCX

**Sage**  
RVB : 153,172,163  
Pantone C : 5635C  
Pantone TCX : 16-5304TCX

Logistic  5  20

| Sizes | Width (cm) | Height (cm) | Length (cm) | Net weight (kg) | Gross weight (kg) | Pieces/Box | Pieces/Bundle |
|-------|------------|-------------|-------------|-----------------|-------------------|------------|---------------|
| XXS   | 40.00000   | 35.00000    | 60.00000    | 9.50000         | 10.60000          | 20         | 5             |
| XS    | 40.00000   | 35.00000    | 60.00000    | 10.20000        | 11.30000          | 20         | 5             |
| S     | 40.00000   | 35.00000    | 60.00000    | 10.60000        | 11.70000          | 20         | 5             |
| M     | 40.00000   | 35.00000    | 60.00000    | 11.40000        | 12.50000          | 20         | 5             |
| L     | 40.00000   | 35.00000    | 60.00000    | 11.90000        | 13.00000          | 20         | 5             |
| XL    | 40.00000   | 38.00000    | 60.00000    | 12.90000        | 13.80000          | 20         | 5             |
| XXL   | 40.00000   | 38.00000    | 60.00000    | 13.40000        | 14.60000          | 20         | 5             |
| 3XL   | 40.00000   | 38.00000    | 60.00000    | 14.00000        | 15.20000          | 20         | 5             |
| 4XL   | 40.00000   | 38.00000    | 60.00000    | 14.60000        | 15.80000          | 20         | 5             |