

KARIBAN

REFERENCE : K5002

SIZES : 34_36_38_40_42_44_46

COMPOSITION :

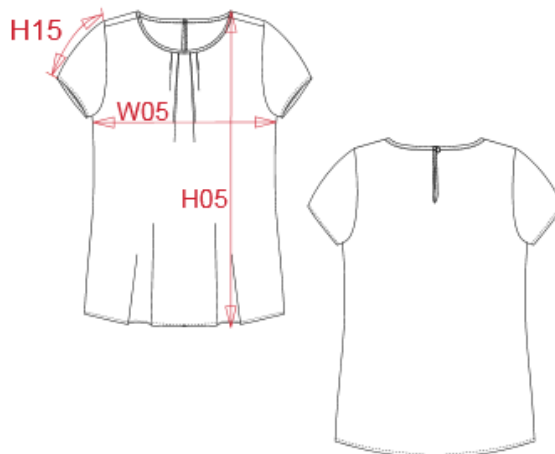
Main fabric : Polyester woven - 85 100%polyester

WEIGHT :

Main fabric : 85 gsm

ARTICLE WEIGHT :

80 gr/pc



DESCRIPTION	
Français :	Blouse crêpe manches courtes femme
English :	Ladies' short sleeve crepe blouse
Nederlands :	Damesbloes in crêpe met korte mouwen
Deutsch :	Kurzarm-Kreppbluse für Damen
Español :	Blusa crepé mujer manga corta
Italiano :	Blusa donna crêpe maniche corte
Português :	Blusa de senhora em crepe de manga curta

COLORS	PANTONE SERIGRAPHIE
Off White	7527C
Deep sea blue	533C

MEASUREMENT							
Description	34	36	38	40	42	44	46
H05 (L) Hauteur totale / Total height	63	64	65	66	67	68	69
W05 (L) 1/2 largeur poitrine à 1.5cm de l'emmanchure / 1/2 chest width at 1.5cm below armhole	45,50	47,50	49,50	51,50	53,50	55,50	57,50
H15C (L) Longueur manche courte / Short sleeve length	11	11,50	12	12,50	13	13,50	14

CARE LABEL				

PACKING	
Box	50 pcs / box 34 => L:60cm W:40cm H:13cm GW:5.30kg NW:3.6kg 36 => L:60cm W:40cm H:13cm GW:5.40kg NW:3.70kg 38 => L:60cm W:40cm H:13cm GW:5.60kg NW:3.90kg 40 => L:60cm W:40cm H:13cm GW:5.80kg NW:4.10kg 42 => L:60cm W:40cm H:13cm GW:6.20kg NW:4.50kg 44 => L:60cm W:40cm H:13cm GW:6.30kg NW:4.60kg 46 => L:60cm W:40cm H:13cm GW:6.50kg NW:4.80kg