

KARIBAN

REFERENCE : K970

SIZES : S_M_L_XL_XXL_3XL_4XL

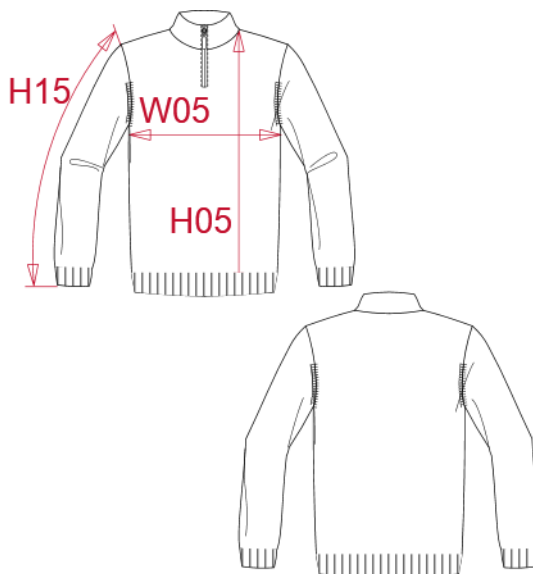
COMPOSITION :

Main fabric : Knit Cotton / Acrylic yarn (32/2) 50/50 - 290 50% cotton / 50%acrylic

WEIGHT :

Main fabric : ± 290 gsm

TECHNICAL DETAIL :



DESCRIPTION
Français : Pull homme ¼ zip
English : Men's ¼ zip jumper
Nederlands : Heren pullover met ritskraag
Deutsch : Herren pullover ¼ reissverschluss
Español : Jersey con cremallera ¼
Italiano : Maglia uomo mezza zip
Português : Camisola de malha meio fecho

COLORS	PANTONE SERIGRAPHIE
Black	Black
Grey melange	Based on 402C
Navy	433C

MEASUREMENT							
Description	S	M	L	XL	2XL	3XL	4XL
H05 (M) Hauteur totale / Total height	68	70	72	74	76	78	80
W05 (M) 1/2 largeur poitrine à 1.5cm de l'emmanchure / 1/2 chest width at 1.5cm below armhole	50	53	56	59	62	65	68
H15I (M) Longueur manche avec bord côte / Sleeve length with rib	63	65	67	69	71	73	75

CARE LABEL				

PACKING	
Box	10 pcs / box S => L:60cm W:40cm H:13cm GW:3.70kg NW:5.30kg M => L:60cm W:40cm H:13cm GW:3.90kg NW:5.50kg L => L:60cm W:40cm H:13cm GW:4.10kg NW:5.70kg XL => L:60cm W:40cm H:13cm GW:4.30kg NW:5.90kg XXL => L:60cm W:40cm H:13cm GW:4.50kg NW:6.10kg 3XL => L:60cm W:40cm H:13cm GW:4.70kg NW:6.30kg 4XL => L:60cm W:40cm H:13cm GW:5.00kg NW:6.60kg