

NS607

Eco-friendly ladies' hemp jacket



About

- Hard-wearing and comfortable material.
- No label: 100% customisable for your project.
- Quality finishes.

90 % organic cotton / 10 % hemp. Cotton twill. Regular fit. Recycled metal buttons. Natural (undyed) fabric with an authentic appearance. Enzyme-washed product. Two chest pockets with flap and button. Button placket on the rear hem. Two piped pockets at the front sides. Front and back panels. Sleeves with slit and buttoned cuffs. Raw Natural is distinguished by its raw, visually textured appearance, dotted with fine particles visible to the naked eye.

 370 g/m² 

Sizes



More information

Logistic



1



10



Country of origin

BD - Bangladesh

Customs code



62023010

Colours



Raw
Natural

Certifications

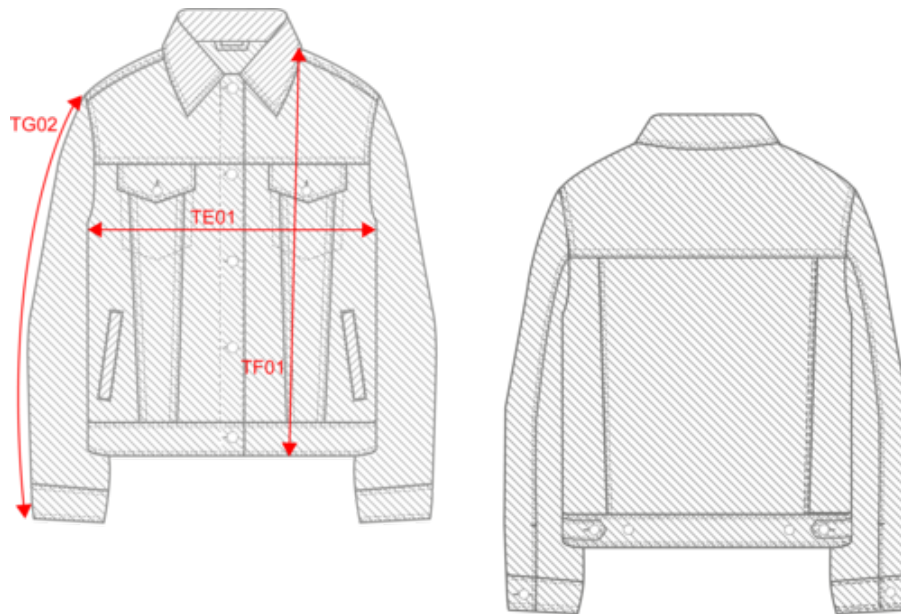


Contains 90% OCS certified Organic Cotton.
Certified by Ecocert (available in accordance
with the OCS standard available at
<https://www.ecocert.org/>
ECS-N°103603 / TOPTEX Belgium

NS607

Eco-friendly ladies' hemp jacket


Dimensions (cm)



Measurements in cm	XS	S	M	L	XL
TE01 - 1/2 chest width at 1.5cm below armhole	45.50	48.50	51.50	54.50	57.50
TF01 - Total height from HSP	58.50	60.50	62.50	64.50	66.50
TG02 - Long sleeve length	61.00	62.00	63.00	64.00	65.00

NS607
Eco-friendly ladies' hemp jacket

Colours information



Raw Natural

RVB : 215,201,179

Pantone C : Based on 7500C

Pantone TCX : Based on 13-10006TCX

Logistic



1



10

Sizes	Width (cm)	Height (cm)	Length (cm)	Net weight (kg)	Gross weight (kg)	Pieces/Box	Pieces/Bundle
XS	40.00000	17.00000	60.00000	6.00000	6.60000	10	1
S	40.00000	17.00000	60.00000	6.40000	7.00000	10	1
M	40.00000	17.00000	60.00000	6.80000	7.40000	10	1
L	40.00000	19.00000	60.00000	7.20000	7.80000	10	1
XL	40.00000	19.00000	60.00000	7.60000	8.20000	10	1