



The iconic babies' crew neck sweatshirt

Medium Fit 6-12 m/68-80cm 24-36 m/92-98cm 280 GSM

Details

- Set-in sleeve
- 1x1 rib at neck collar, sleeve hem and bottom hem
- Shoulder placket with 1 snap in matching body colour and 1 hidden snap for easy dressing
- Inside back neck tape in single jersey
- Self fabric half moon at back neck
- Single needle topstitch at neck collar
- Sleeve hem and bottom hem with twin needle topstitch

Composition

Shell - French Terry
 85% Cotton - Organic Ring Spun Combed , 15% Polyester - Recycled - 280 GSM
 Fabric washed , Light sueded

Care

Wash similar colours together, no ironing on print,
 wash and iron inside out.



Country of origin

Weaving : Bangladesh
 Dyeing : Bangladesh
 Assembly : Bangladesh



Whites



Colors



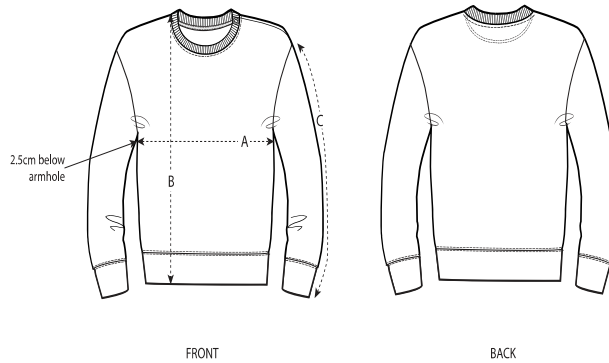
Essential Heathers



Special Heathers



Size Guide



Sizes	6-12 m/68-80cm	12-18 m/80-86cm	18-24 m/86-92cm	24-36 m/92-98cm
A Half Chest	29.5	31	32.5	33.5
B Body Length	32	33.5	35.5	38
C Sleeve Length	22	22.5	24.5	27

Packing

Sizes	6-12 m/68-80cm	12-18 m/80-86cm	18-24 m/86-92cm	24-36 m/92-98cm
Pieces/bag	5	5	5	5
Pieces/box	30	30	30	30