



The unisex recycled hoodie sweatshirt

Medium Fit

XXS 3XL

350 GSM

Details

- Made from in-house organic cutting waste
- Set-in sleeve
- Double layered hood in self fabric
- Round drawcords in matching body colour with metal tipping
- Metal eyelets
- Inside herringbone back neck tape
- Self fabric half moon at back neck
- Single needle topstitch at neckline and along hood opening
- 1x1 rib at sleeve hem and bottom hem
- Armhole, sleeve hem and bottom hem with twin needle topstitch
- Kangaroo pocket at front
- The recycled fibers make the fabric surface less smooth

Composition

Shell - French Terry
 42% Cotton - Recycled Open End , 15% Polyester - Recycled , 43% Cotton - Organic Raw
 Open End - 350 GSM
 Fabric washed , Light sueded

Care

Wash similar colours together, no ironing on print,
 wash and iron inside out.



Country of origin

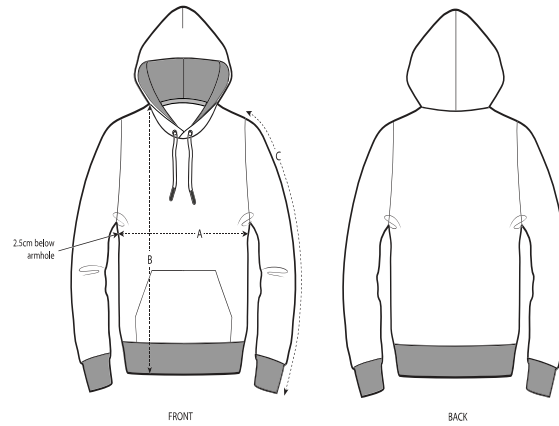
Weaving : Bangladesh
 Dyeing : Bangladesh
 Assembly : Bangladesh



Colors



Size Guide



Sizes		XXS	XS	S	M	L	XL	XXL	3XL
A	Half Chest	47	49.5	52	54.5	57.5	60.5	63.5	66.5
B	Body Length	61	63	68	72	74	76	78	80
C	Sleeve Length	59	60	64	65.5	67	68.5	70	70

Packing

Sizes		XXS	XS	S	M	L	XL	XXL	3XL
	Pieces/bag	5	5	5	5	5	5	5	5
	Pieces/box	10	20	20	20	20	20	20	10